



touchwood<sup>®</sup>  
LIFESPACES  
Thoughtful by Nature

INVEST. EARN. ENJOY.

YOUR PARTNERS IN  
PROSPERITY AND PEACE OF MIND



BOOK A SITE VISIT  
7030242400 | 7039292900

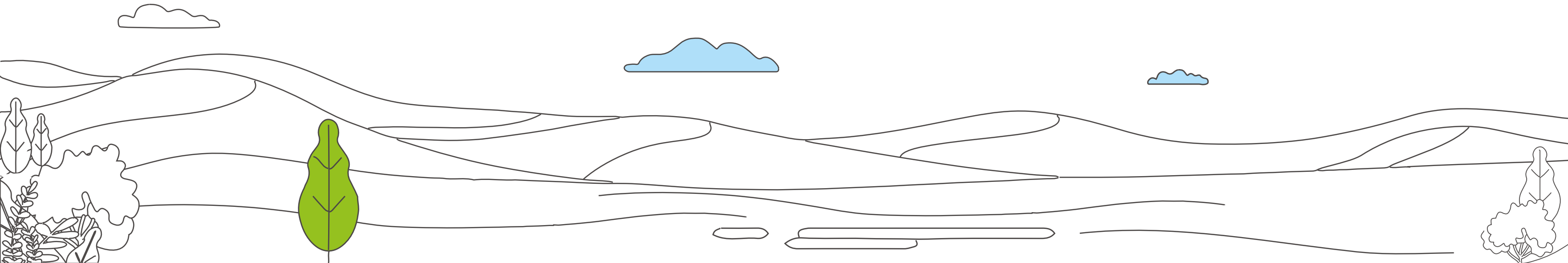
[www.touchwoodlifespaces.com](http://www.touchwoodlifespaces.com)



# Everything you would like to know about your Lifespace!

- 01 About Touchwood .....
- 02 Touchwood SPIRIT .....
- 03 Igatpuri- Wellness & Investment Capital of India .....
- 04 Why Investment Plots & Passive Income Homes .....
- 05 Why Invest with Touchwood Lifespaces .....
- 06 Our Facts. Our Achievements .....
- 07 Our Offerings .....
- 08 NEST- Our Validation .....
- 09 Think Touchwood. Think Igatpuri .....

- 10 Campsyde .....
- 11 Mountainsyde .....
- 12 Farmsyde .....
- 13 Hillsyde .....
- 14 Countrysyde .....
- 15 Riversyde .....
- 16 Presale Assistance .....
- 17 Postsale Assistance .....



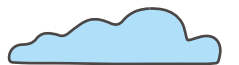
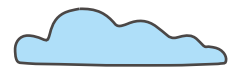
# IGATPURI'S 1<sup>st</sup> & ONLY

Creators of Nature Inspired  
Passive Income Homes

Crafted Exclusively for Smart Investors



Our Brand Promise - Peaceful Living with Healthy Returns.





As per the Ancient belief trees (oak wood) were homes of good spirits. Hence, touching wood would help ward off evil spirits. Therefore, there is a tradition to say '**Touchwood**' to express gratitude & bestowing Good luck.

At Touchwood whatever we do in our social organization and businesses is invariably **Inspired by Nature.**

We at Touchwood, through our culture, services and products bring Positive Energy and in turn Good Luck to all our team members, clients, vendors, associates, partners, stakeholders and community as a whole.

We promise to build the most Optimistic and Happier **Communities** around the globe.

[www.touchwoodworld.com](http://www.touchwoodworld.com)

## Triangle of Optimism







## WHAT DO WE STAND FOR?

With innovation at its heart, the Touchwood Spirit reflects the values that drive our organization. They form the basis of our core values and are the driving factors of how we conduct businesses.



### SOCIAL RESPONSIBILITY

Be Good. Do Good.



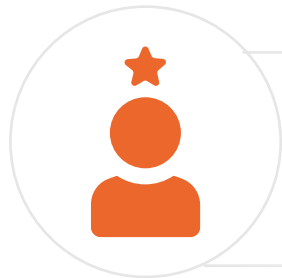
### PASSION

Love what you do,  
Do what you love.



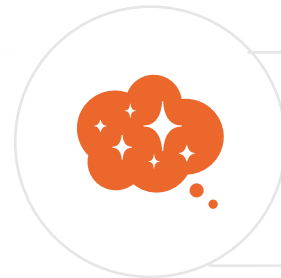
### INTEGRITY

Doing the right thing when no one is watching.



### RESPECT

Give & take with gratitude.



### IMAGINATION

Thinking from mind and believing from heart.



### TEAMWORK

Believing in a purpose that is larger than just yourself.



[www.touchwoodfoundation.in](http://www.touchwoodfoundation.in)



[www.touchwoodsolutions.com](http://www.touchwoodsolutions.com)



[www.touchwoodlifespaces.com](http://www.touchwoodlifespaces.com)



[www.touchwoodbliss.com](http://www.touchwoodbliss.com)

# Igatpuri - Well Connected To Nature And Infrastructure

Being almost 2000 ft above sea level, Igatpuri is a unique, peaceful, and pristine abode for nature lovers.

Igatpuri an ultimate destination for a peaceful getaway, while still being connected to the outside world.

## Connectivity

## Distance

## Duration

 Roadways	▶ Samruddhi Highway	3 Km	5 Min
	▶ Mumbai Highway	2 Km	2 Min
	▶ Bhandardara Road	1 Km	1 Min
 Railways	▶ Igatpuri Junction	5 Km	10 min
	▶ Kasara Railway Station	19 Km	20 min
	▶ Nashik Railway Station	52 Km	50 min
 Airways	▶ Nashik Airport	65 Km	1 hr
	▶ Shirdi Airport	114 Km	2 hr
	▶ Mumbai Airport	140 Km	2.5 hr



# Wellness & Investment Capital of India

## Social Infrastructure

### Samruddhi Highway

Connecting to main cities and benefiting more than 390 towns and 14 districts



### Renowned Hospitals



### Esteemed Education Institutions

National & International Food & Beverage Brands Like Starbucks, KFC, Mc Donalds, K Bhagat Tarachand, etc.

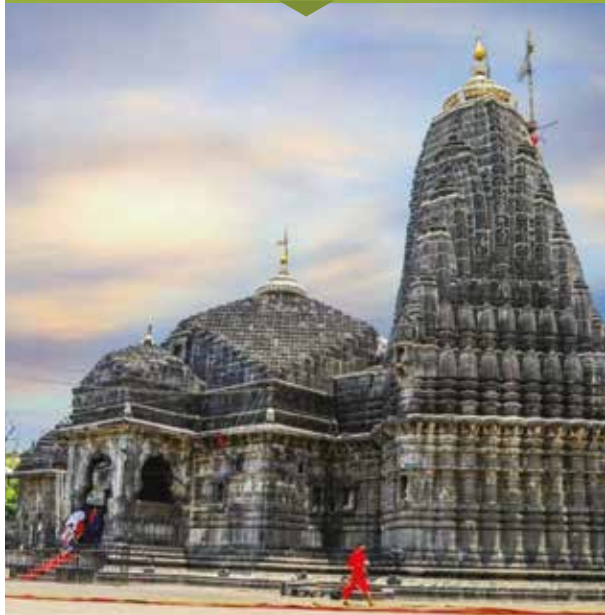


## Spiritual Wellness

### Dhamma Giri Vipassana International Academy Worlds biggest wellness centre



### Trimbakeshwar



### Shirdi

## Tourist Attractions

### Sandhan Valley

Maharashtra's own Grand Canyon,  
Asia's 2<sup>nd</sup> biggest valley



### Bhavali dam

Hidden treasure of Maharashtra



### Kalsubai

Highest Mountain peak in Maharashtra



### Ashoka Waterfalls



# Why Investment Plots/Passive Income homes Vs FD, RD, Gold, Share Market

## APPRECIATION

Estimated appreciation of **15% per annum**

## ONGOING INCOME

Estimated rental income of **6 - 10 % per annum**

## LIQUIDITY

**Easy to liquidate** compared to real estate investment in cities due to low ticket value & high demand

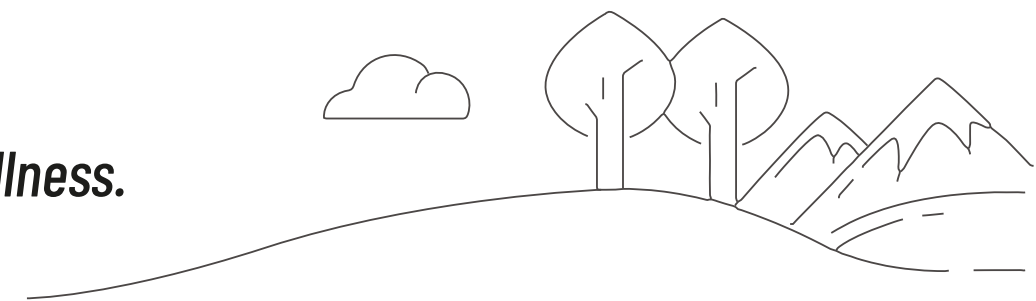
## RISK

Unlike gold & share market investments, this is the only investment which **grows in monetary value as well as at minimal risk**

## EXPERIENCE

Can be **experienced by your loved ones and passed on through generations**

*An investment, which brings joy, peace of mind and family wellness.*



# 9 Reasons to Invest with Touchwood Lifespaces



All our properties are GENERAL with title clear Report since 1952



6 unique projects to choose from with different nature elements



Thoughtfully designed layouts assuring maximum efficiency and beautiful view



We have the most promising and diversified Naturally Blessed land bank in Igatpuri



Owners of India's 1<sup>st</sup> & only pure veg nature retreat with 7000+ google reviews and 4.8 rating **Touchwood Bliss**



India's best team of architects, landscape designers, PMC consultants and hospitality designers



We focus on holistic design with a uniform villa concept that guarantees same nature view for a lifetime



All our projects are contextually designed as per local climatic conditions and resources availability



Only developer in Igatpuri to offer end-to-end real estate ensuring secured lifetime return on investment





# Our Achievements. Our Experience.

10+

Years Of Experience In Real Estate Development

20+

Completed Real Estate Projects

5+

Ongoing Real Estate Developments

1 MILLION

Sq.ft Land Developed

2 MILLION

Sq.ft Land Under Development

2000+

Dream Home Spaces Delivered

15+

Countries, Clients Network Spread Across 6 Continents

1000+

Delighted Clients

7 National & International Awards Received For Nature Integrated Innovative Concepts & Thoughtful Architecture In Hospitality

# Taking Igatpuri to the World

6 CONTINENTS

15 COUNTRIES

50 CITIES

1000+ CLIENTS

∞ POSSIBILITIES



## Touchwood Lifespaces Clientele

India • Australia • New Zealand • Qatar • Dubai • USA • UK • Germany  
Russia • South Africa • Singapore • Oman • Ireland • Netherlands • Brazil

**1<sup>st</sup> & only player in the industry offering all 6 services inhouse.**





# OUR OFFERINGS



## INVESTMENT PLOTS

---

NA Plots

.....  
Resort Plots

.....  
Organic Farms



## PASSIVE INCOME HOMES

---

Weekend Homes

.....  
Resort Homes

.....  
Farmhouses



## OUR UNIQUE OFFERINGS

---

Nature Integrated Work Spaces

.....  
Artistic Spaces





By **touchwood** Lifespaces

## **NEST signifies spaces that are inspired by nature.**

Birds build a nest with the warmth, precision, and envelopment that characterizes Loving Nature. In this modern world, we all wish to be nested and loved.

At Touchwood Lifespaces, **NEST** is validation that recognizes real estate projects which are **N**ature Integrated, **E**nvironment Conscious, **S**pacious and **T**houghtful.

### **Nature Integrated**

Landscape being the only inspiration, spaces are designed intaking and capturing the essence.

---

### **Environment Conscious**

Sustainable and ecofriendly built where surroundings remain untouched.

---

### **Spacious**

Sustainable and ecofriendly built where surroundings remain untouched.

---

### **Thoughtful**

Thoughtful by nature and experts inputs are valued, thought over and presented with implemented output.





# Think Igatpuri. Think Touchwood.

## Our Completed Projects

**CaMpsyde™**  
*Where the adventure begins!*

**Mountainsyde™**  
*Where the mountains inspire your living!*

**Farmsyde™**  
*Where the farms nourish your soul!*

---

## Our Ongoing Projects

**Hillsyde™**  
*Where the hills tell your story!*

**Countrysyde™**  
*Where the country brings you peace!*

**Riversyde™**  
*Where the river sings your melody!*

**Greensyde**  
*Where the meadows make you feel alive!*

---

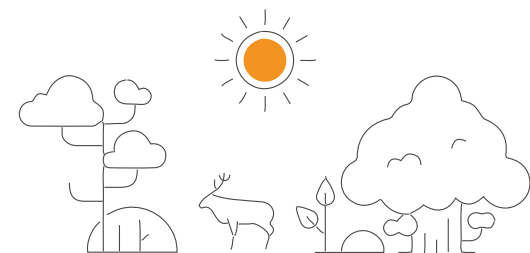
## Our Upcoming Projects

**Forestsyde**  
*Where the trees oxygenate with love and care!*

**Lakesyde**  
*Where the lake calms your spirit!*

**Brooksyde**

**Valleysyde**





Nestled in the most admired locations of Igatpuri



# CaMpsyde™

*Where the adventure begins!*

## Igatpuri's 1<sup>st</sup> Glamping Tent Resort!





# Where glamour meets camping!

- Warping custom designed tent laid out in a circular pattern to bring dynamism to the tents.
- Adventure themed glamping facility with attached toilets including hot and cold shower. Premium tents include a Dress area.
- Tent opens to a 360-degree panoramic view of the mountains, facing west for viewing the perfect sunsets.
- Tents lawns have access to a variety of outdoor activities and a kid's playground.

- **Location:** Touchwood Bliss, Igatpuri
- **Distance From Highway:** 4 Kms
- **Landmark:** Near Bhavali Dam
- **Essential Services:** At 2 kms





**Mountainsyde™**  
*Where the mountains inspire your living!*

# Igatpuri's 1<sup>st</sup> And Only Courtyard Villas!







## European aesthetics meet Indian Soul

- Mountain villas centred around an open to sky courtyard, letting nature into the heart of the living area.
- Spacious rooms with deep verandahs to allow guests to enjoy all seasons, come rain come shine, from the comfort of their rooms.
- Toilets with outdoor shower facility to give a unique experience.
- Angled windows give privacy from neighbours while still providing the view.
- Humble, subdued structure blends in with its surrounding.



● **Location:** Touchwood Bliss, Igatpuri

● **Landmark:** Near Bhavali Dam

● **Distance From Highway:** 4 Kms

● **Essential Services:** At 2 kms





# Farmsyde™

*Where the farms nourish your soul!*

## Igatpuri's 1<sup>st</sup> And Only Rurban Homes!







## Where urban aesthetics meet farm vibes

- Custom designed Masterplan layout of the plots without compound walls allows for consolidated green lawns and farms.
- The structure of the villa mirrors the hills, rising up from the farm, higher and higher till it reaches the road.
- The Villas have a unique urban presence, providing a landmark from the highway. Making an address for the project.
- The rooms are staggered with courtyards, always giving an integrated outdoor-indoor experience. ALL rooms open out to views of the mountains.

- **Location:** Touchwood Bliss, Igatpuri
- **Landmark:** Near Bhavali Dam

- **Distance From Highway:** 4 Kms
- **Essential Services:** At 2 kms







# Stay Happy And Grounded Surrounded By Hills!

Plots starting from 16.20 Lacs







## Close To Highway. Closer To The Hills!

- Vastu compliant hill facing bungalows.
- Located in the lap of nature, at the foot of a hill, adjoining a forest.
- Villa includes amenities like a lap pool, deck, sky terrace with barbeque.
- Villa is surrounded by zen gardens, shading the villa while also providing privacy.

- **Location:** Take Ghoti
- **Landmark:** Near Shagun Water Park

- **Distance From Highway:** 1.5 Kms
- **Essential Services:** At 1 km





# Urban Aesthetics Meets Rural Vibes!

Plots starting from **21.60 Lacs**







## Where the country brings you peace!

- European House with an Indian soul. European themed villas with custom layouts.
- Non-standard layout of plots, which is unique to find, since all layouts are standardized.

● **Location:** Pimpri Sado Village

● **Landmark:** Taloshi Dam Road Touch

● **Distance From Highway:** 1.5 Kms

● **Essential Services:** At 200 Mtrs





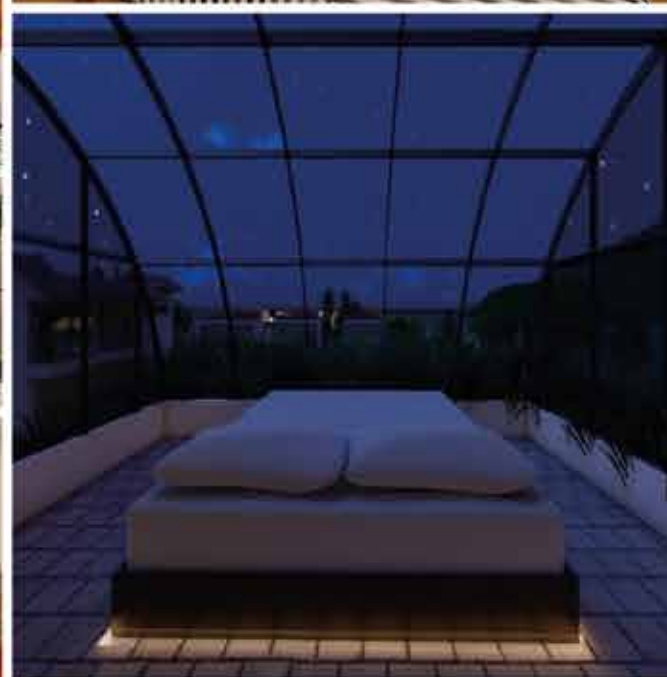
**Riversyde™**  
*Where the river sings your melody!*

# Live Where Nature Flows!

Plots starting from **27 Lacs**







## Where the river witness your journey.

- Efficiently designed villa, power packed with amenities: including lap pool with deck, double height foyer, sky room on terrace and an aesthetic bent towards art throughout the villa.
- Within a standard layout, each villa has a slight variation, giving it an identity and making it immediately identifiable to its owner.
- Use of zero waste finishes, wind tower for passive cooling, sensitivity of form to directions, make it a sustainable project.

- Location: Pimpri Sado Village
- Landmark: Bhavali Dam Road Touch
- Distance From Highway: 1.5 Kms
- Essential Services: At 100 Mtrs



# Presale Assistance



Team Of Professionals  
To Handle Your Enquiry



Efficient And Futuristic  
Layout Planning



Thoughtful  
Architectural Designs



Flexible Payment  
Options



Full Proof Legal  
Ownership



Complete  
Government Liasoning





# Post Sales Assistance



Dedicated Account Management Team



Team Of Project Management Consultant



Project Monitoring Updates



Complimentary Stay



Property Management



Rental Management



Resale Assistance

